



INTEQ

Company : Santos

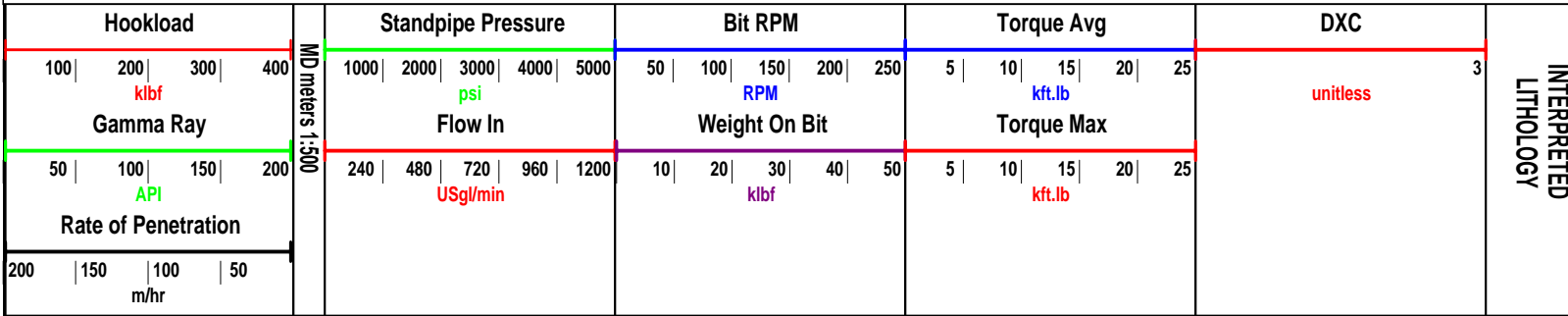
Well : Henry-2DW1 ST1

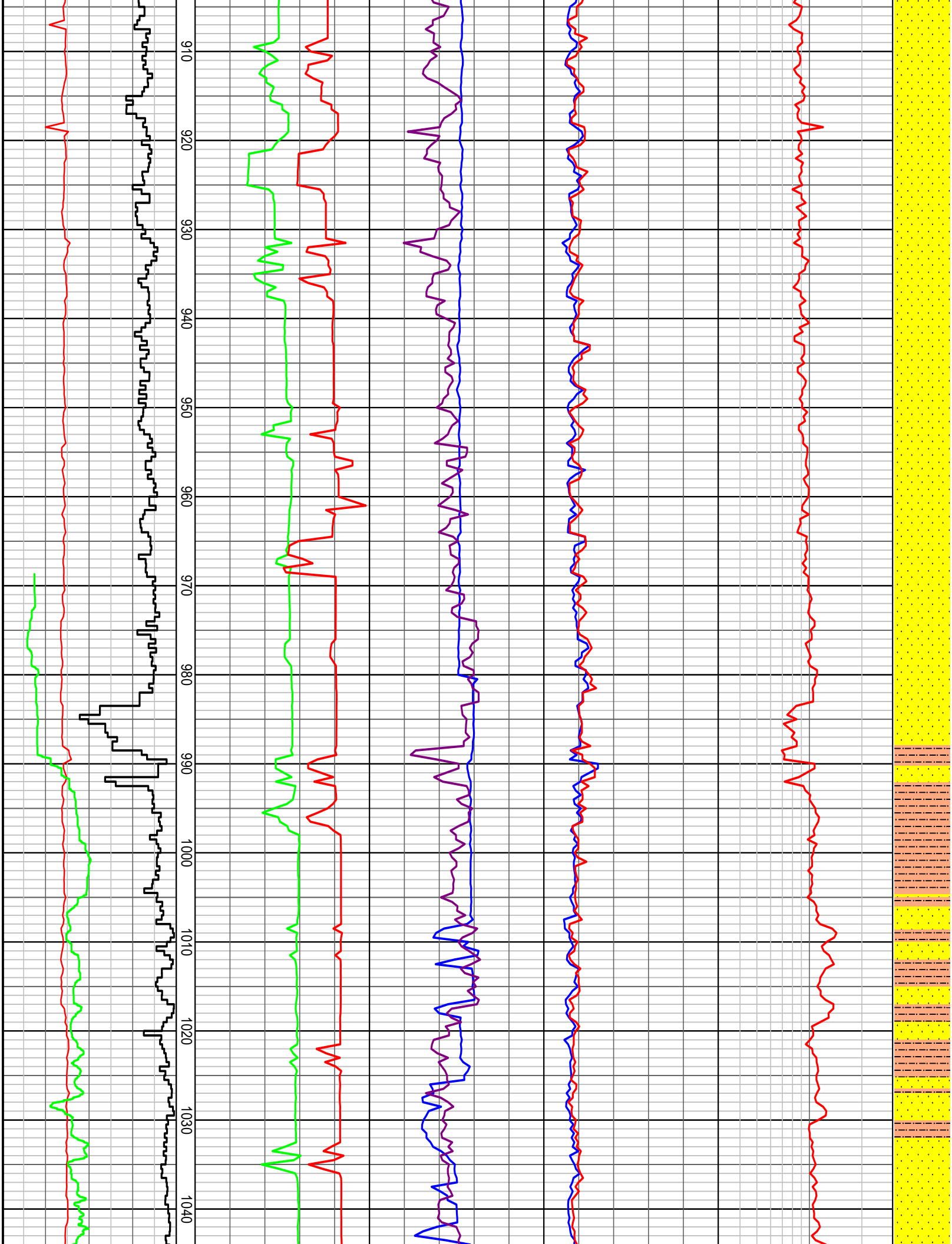
Interval : 802.00 - 2648.00 meters

Created : 16/Oct/2008 9:44:30 PM

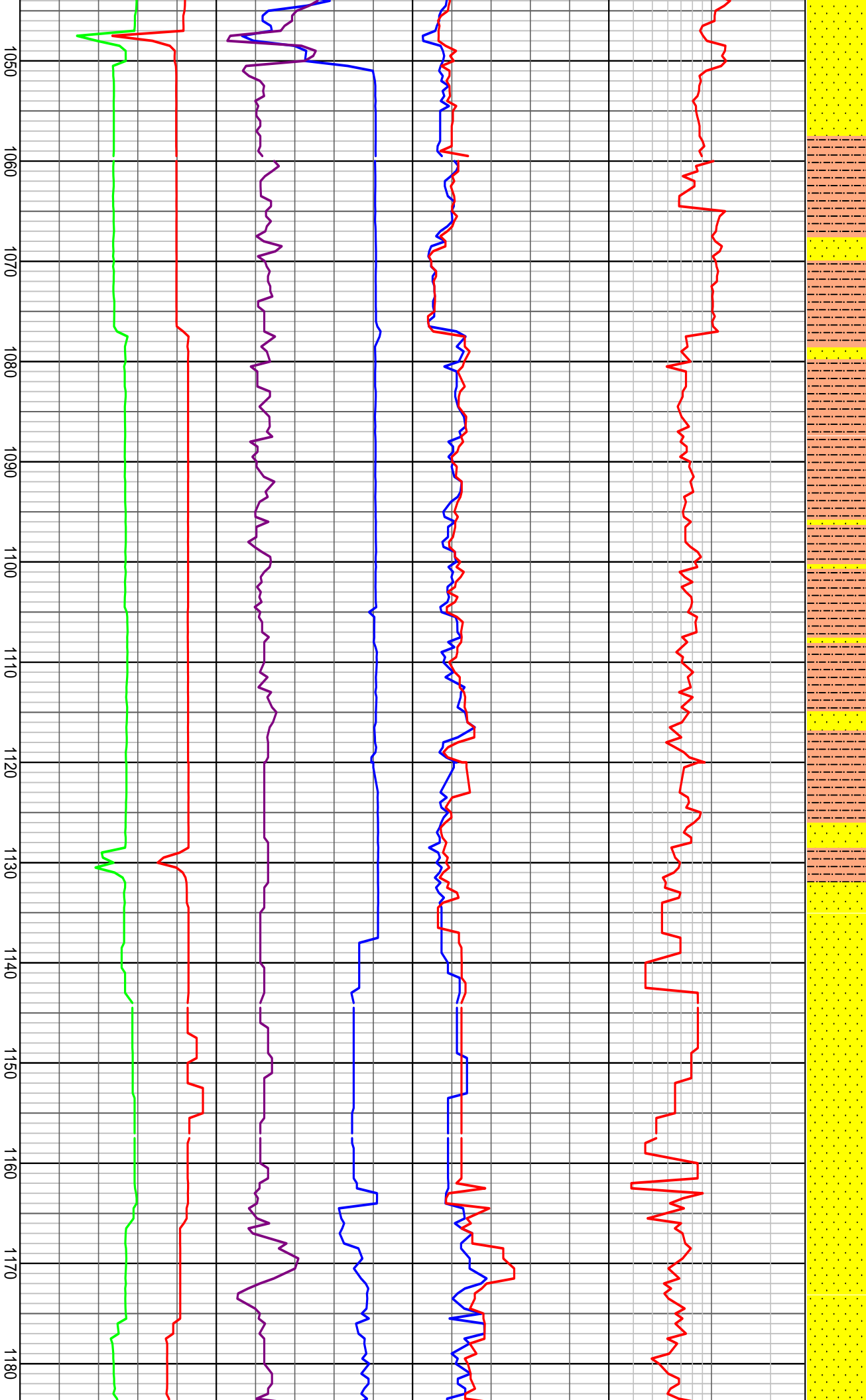


### HENRY 2DW1 ST1 DRILLING DATA PLOT

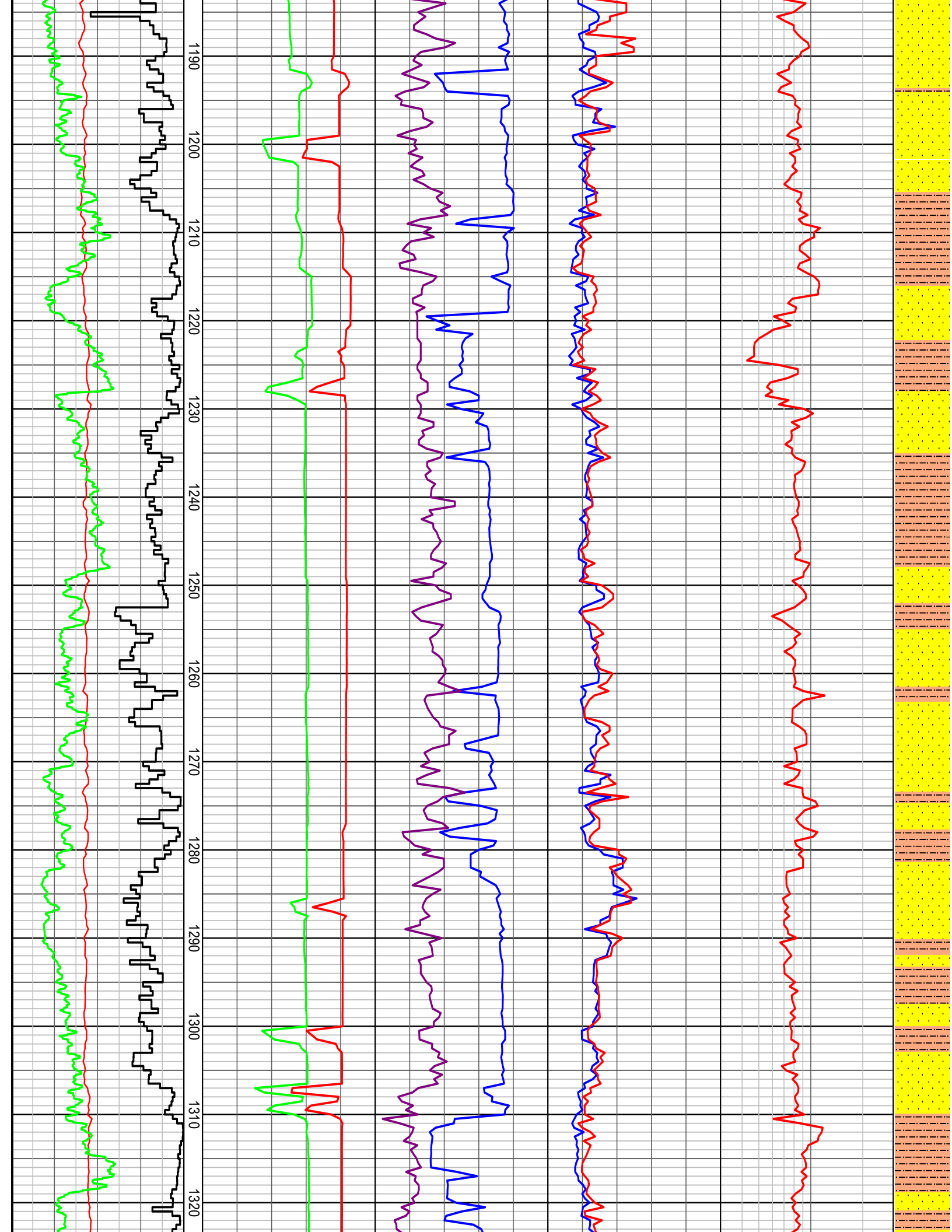




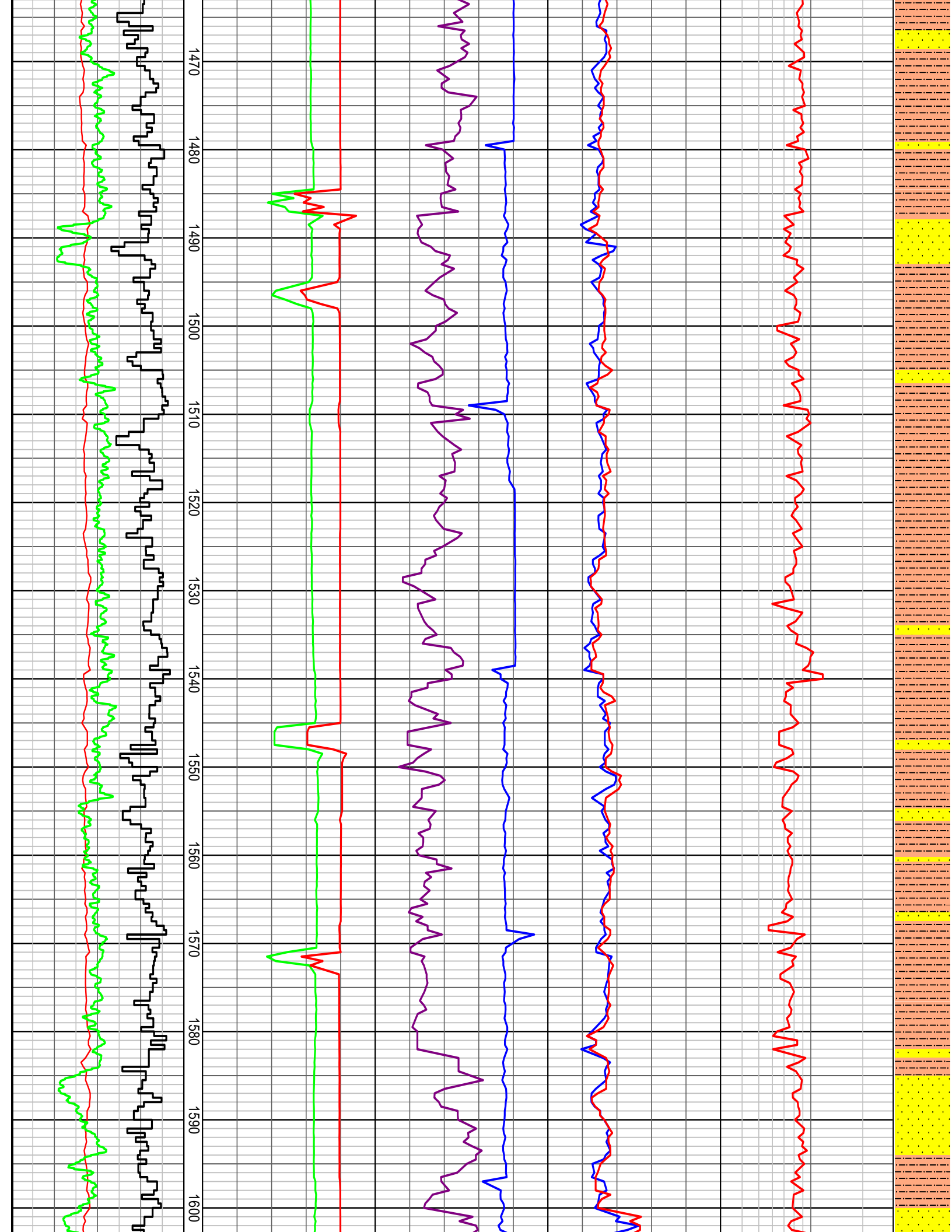
NB 10 REED R SX616M-A16 L50C  
Bit  
311mm (12-1/4") 3x15 3x16 jets  
In: 1059.00m Out: 2050.00m  
Drilled 1000.00m in 45.1hrs  
0.8-WT-S-X-1-BT-TD

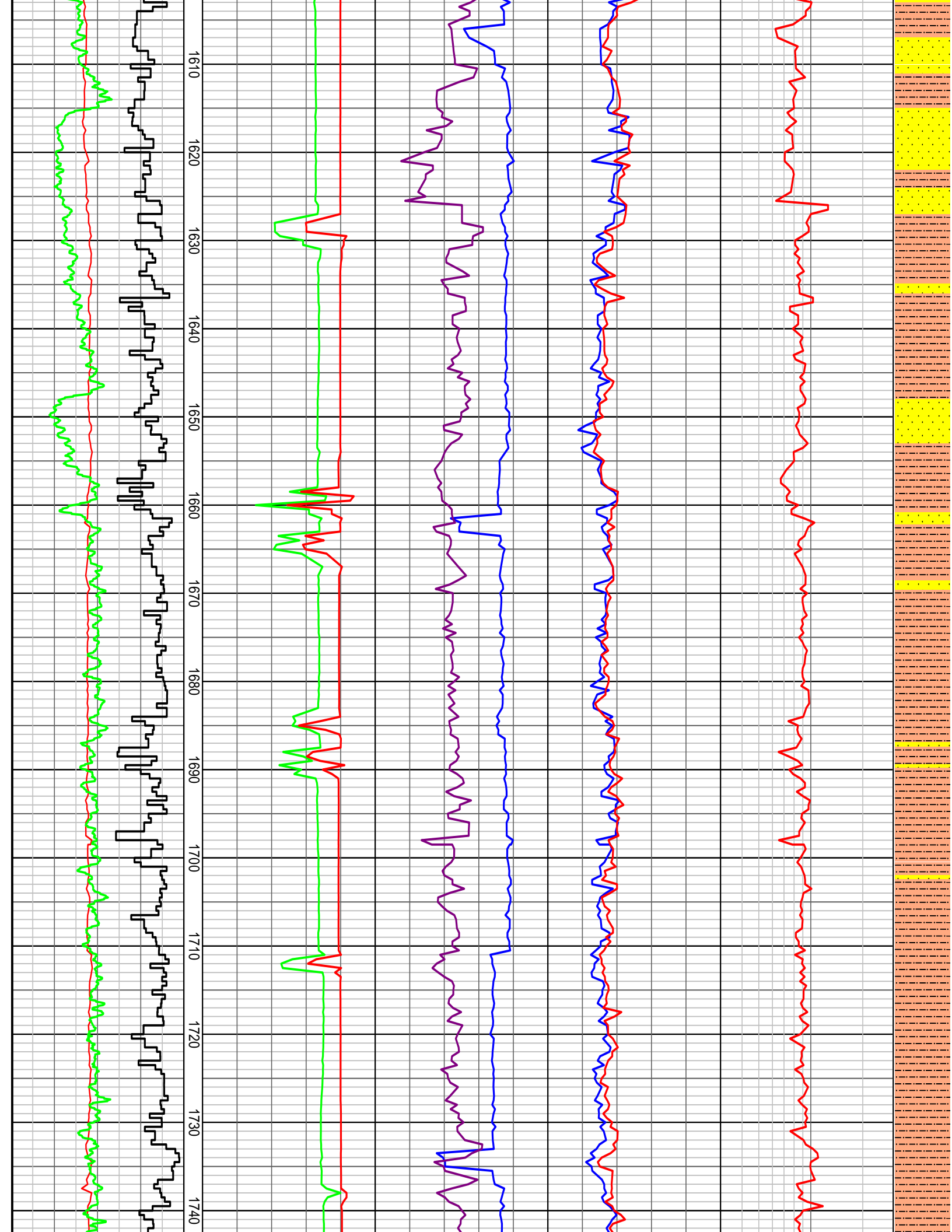


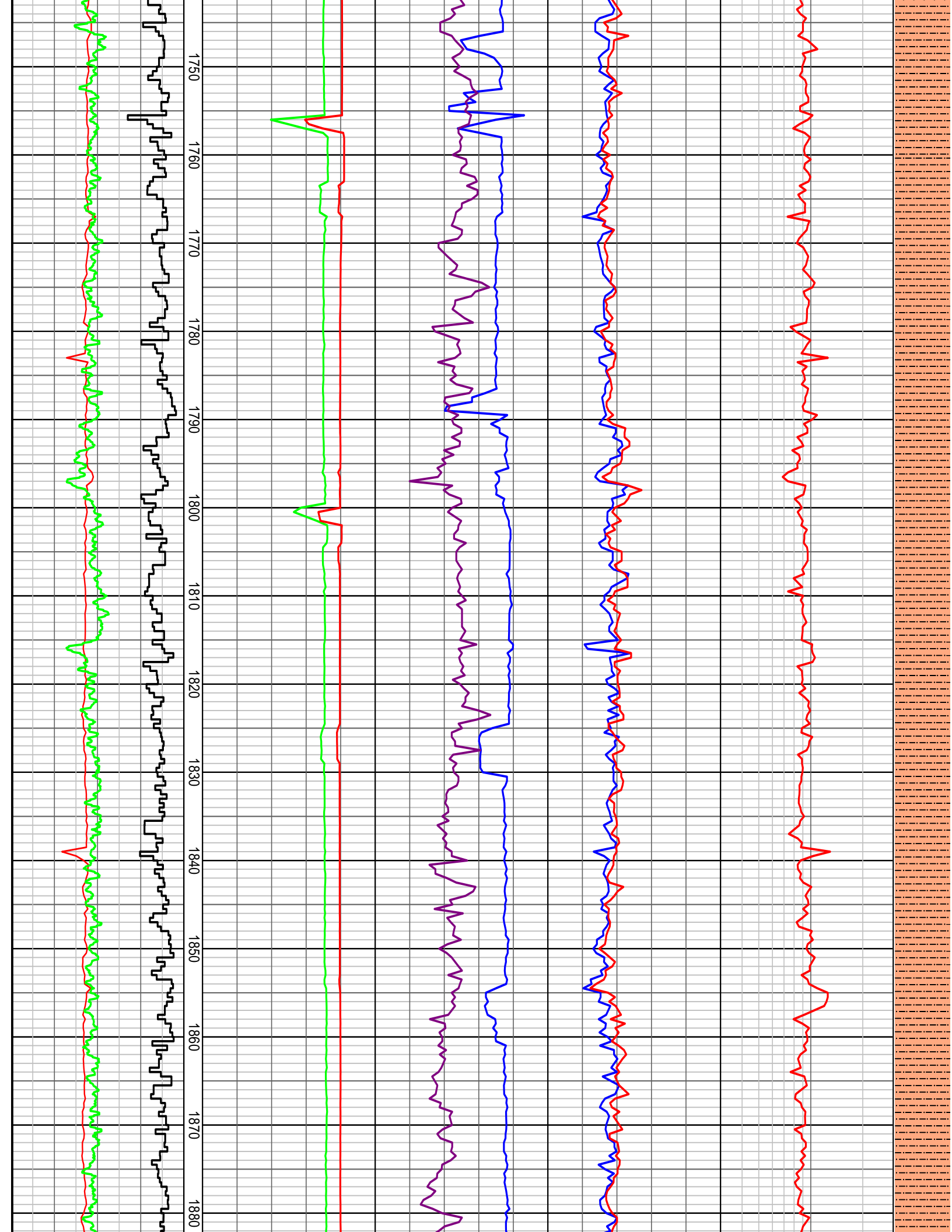
1050  
1060  
1070  
1080  
1090  
1100  
1110  
1120  
1130  
1140  
1150  
1160  
1170  
1180



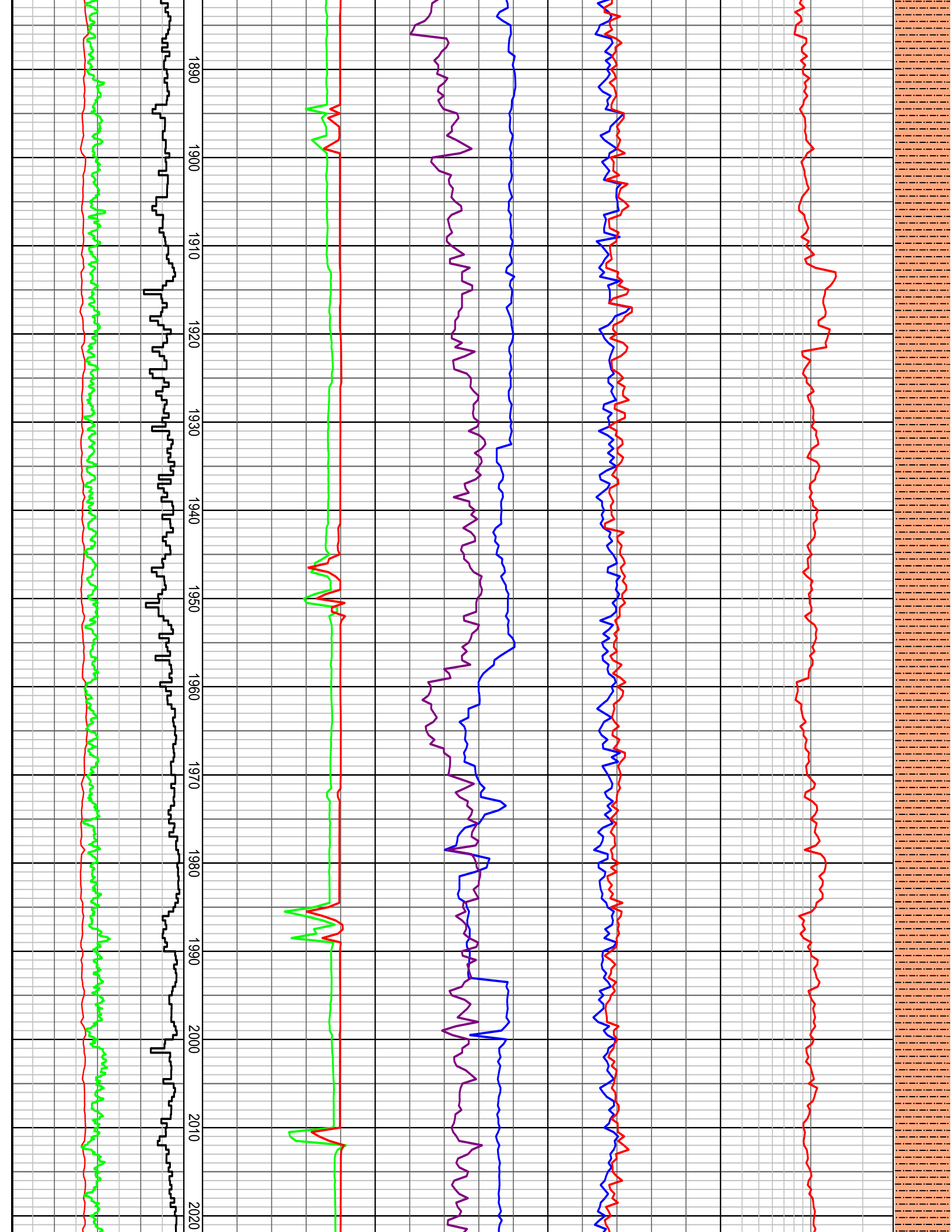


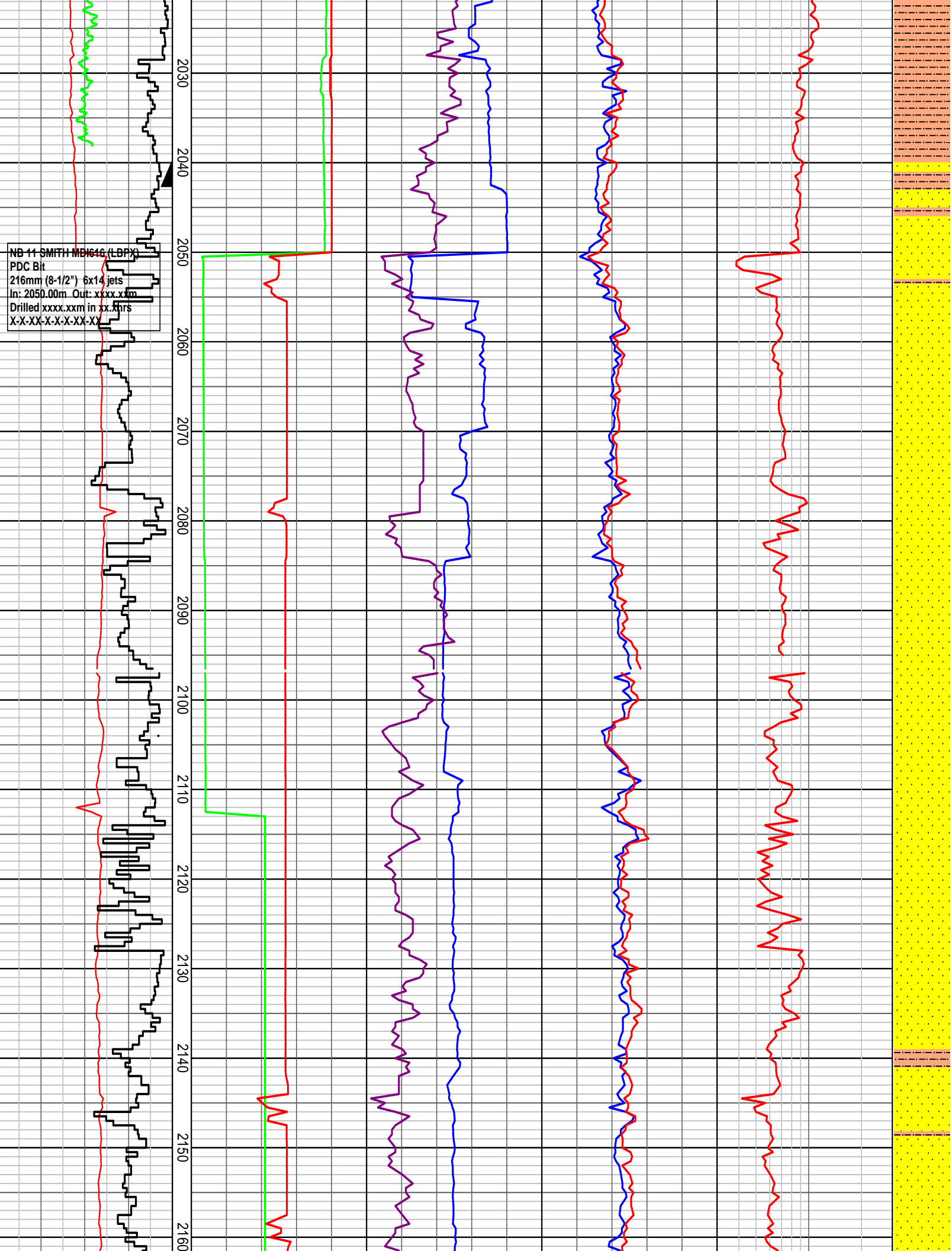


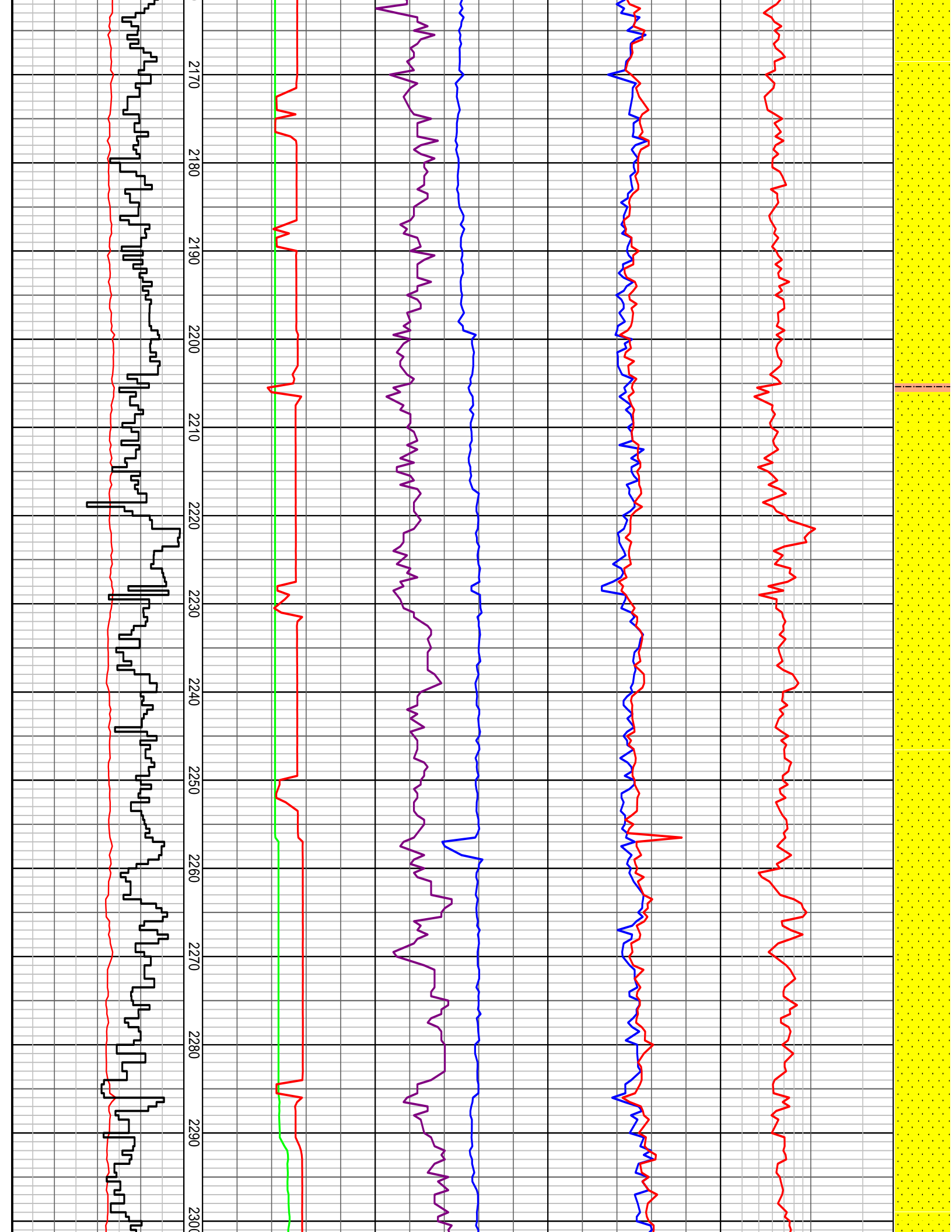


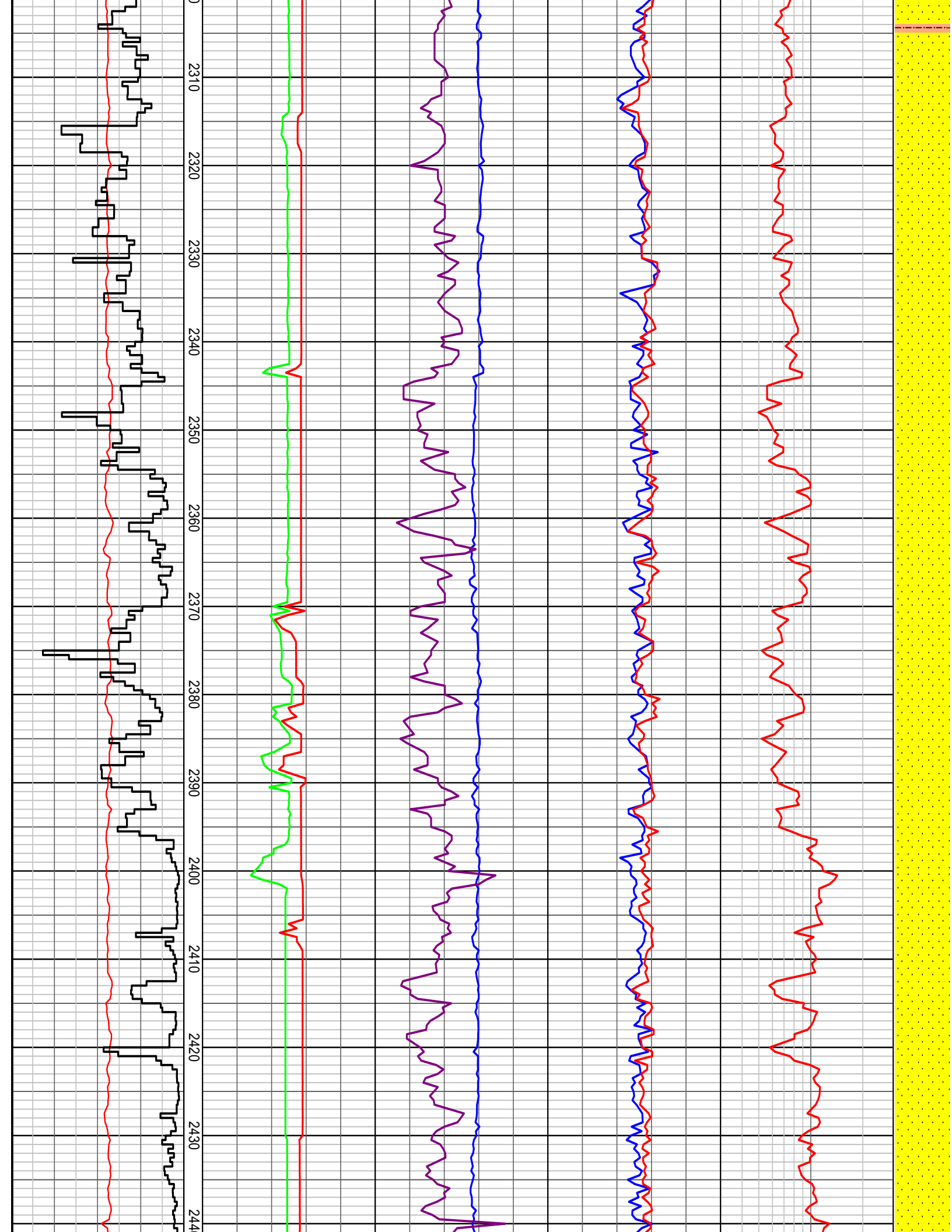


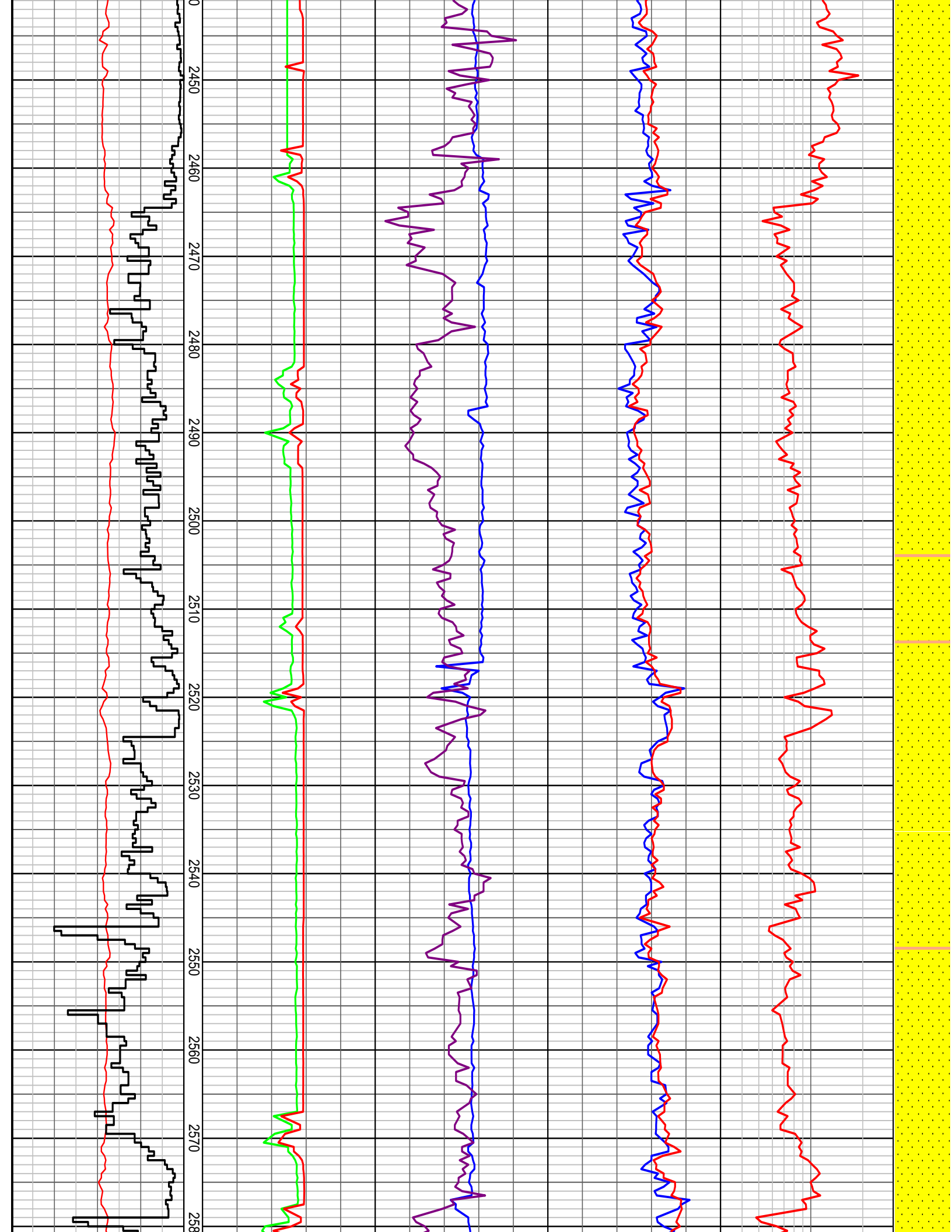


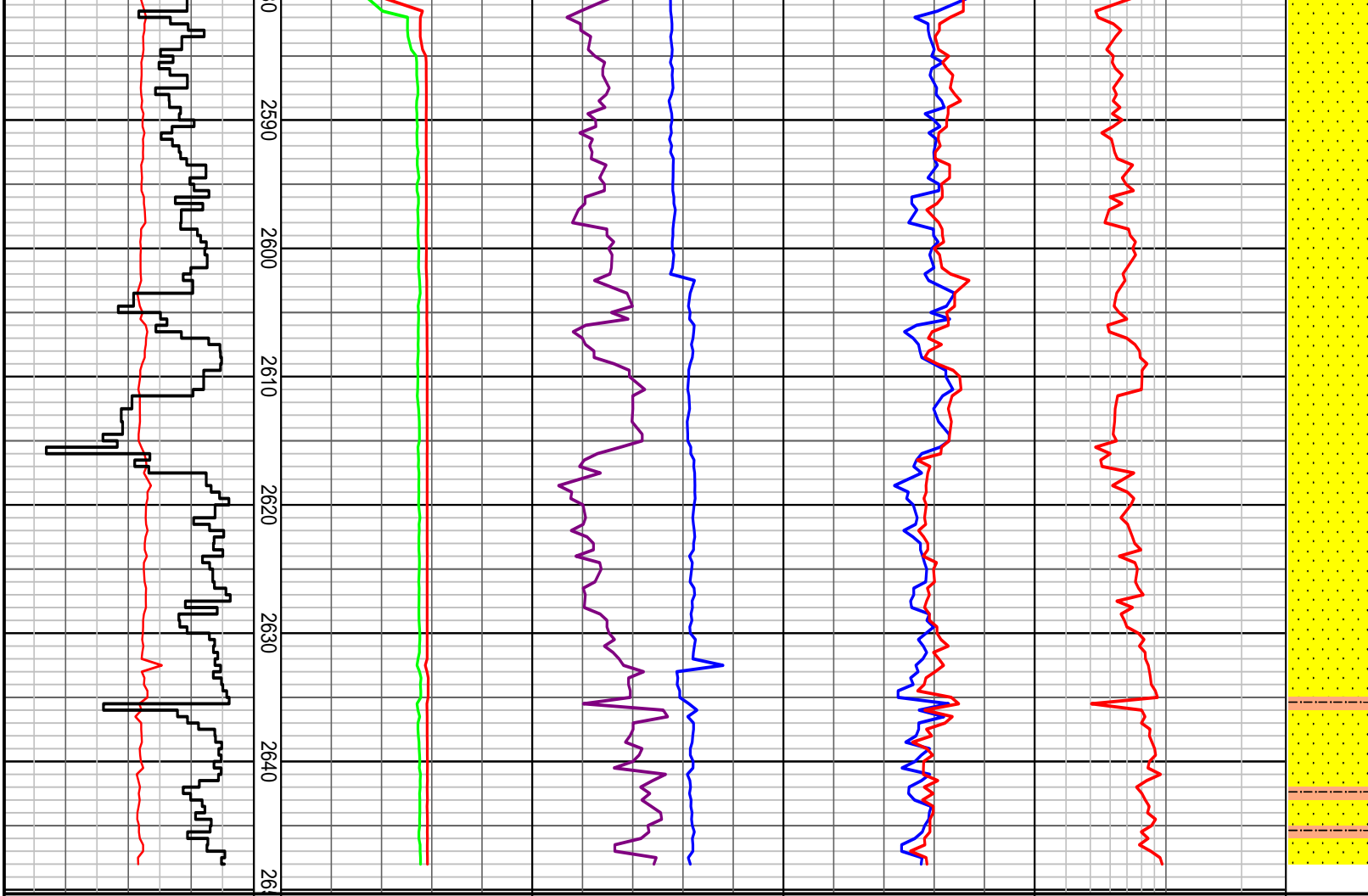












### HENRY 2DW1 ST1 DRILLING DATA PLOT

Hookload	Standpipe Pressure	Bit RPM	Torque Avg	DXC	INTERPRETED LITHOLOGY	
100   200   300   400 kibf	1000   2000   3000   4000   5000 psi	50   100   150   200   250 RPM	5   10   15   20   25 kft.lb	unitless		3
Gamma Ray	Flow In	Weight On Bit	Torque Max			
50   100   150   200 API	240   480   720   960   1200 USg/min	10   20   30   40   50 kibf	5   10   15   20   25 kft.lb			
Rate of Penetration						
200   150   100   50 m/hr						